

Great Yarmouth Third River Crossing

Application for Development Consent Order

Document 6.3: Environmental Statement

Volume III: ES Figures –

Chapter 16

Planning Act 2008

The Infrastructure Planning (Applications: Prescribed Forms and Procedure) Regulations 2009 (as amended) (“APFP”)

APFP regulation Number: 5(2)(a)

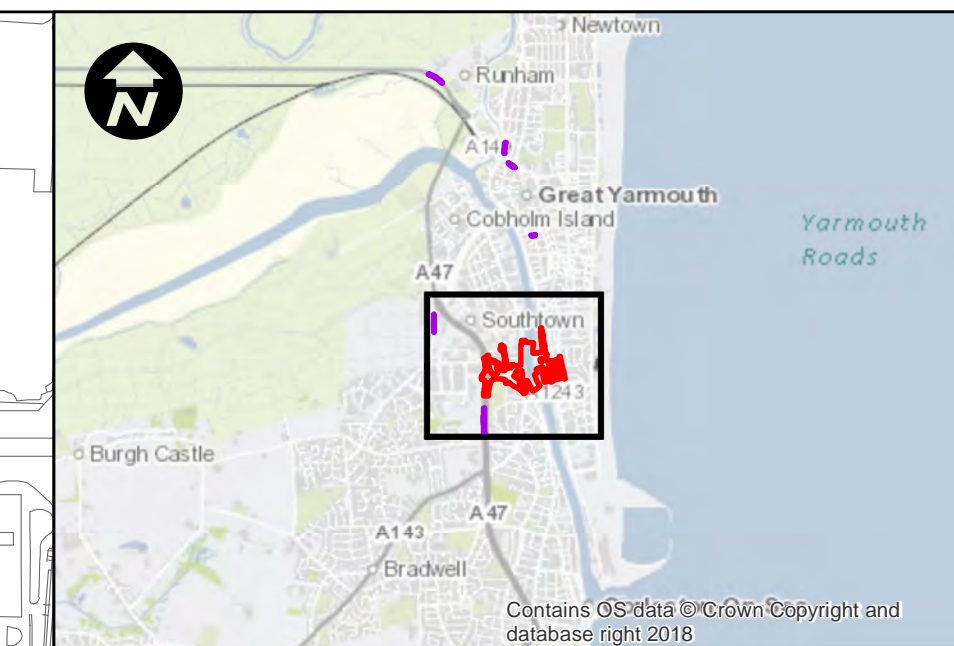
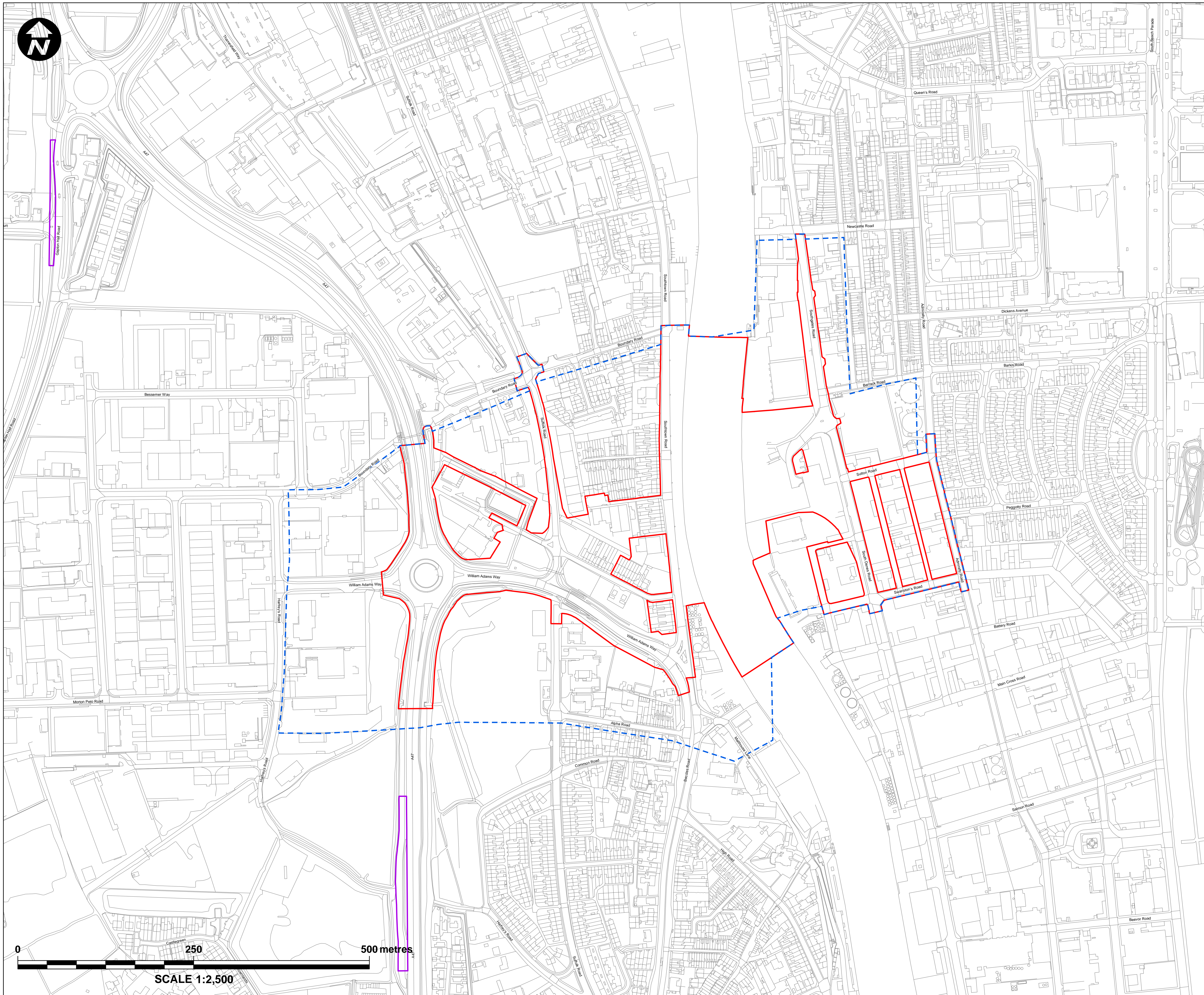
Planning Inspectorate Reference Number: TR010043

Author: Norfolk County Council

Document Reference: 6.3 – ES Figures: Chapter 16

Version Number: 0 – Revision for Submission

Date: 30 April 2019



- Key:**
- Principal Application Site
 - Satellite Application Sites
 - Study Area Boundary

Mapping reproduced by permission of Ordnance Survey on behalf of HMSO.
 © Crown copyright and database rights 2018 Ordnance Survey 100019340.

REVISION	DRAWN	CHECKED	APPROVED	DATE

Norfolk County Council
 Tom McCabe
 Executive Director of
 Community and Environmental Services
 Norfolk County Council
 County Hall, Martineau Lane
 Norwich NR1 2SG

PROJECT TITLE
**GREAT YARMOUTH
 THIRD RIVER CROSSING**

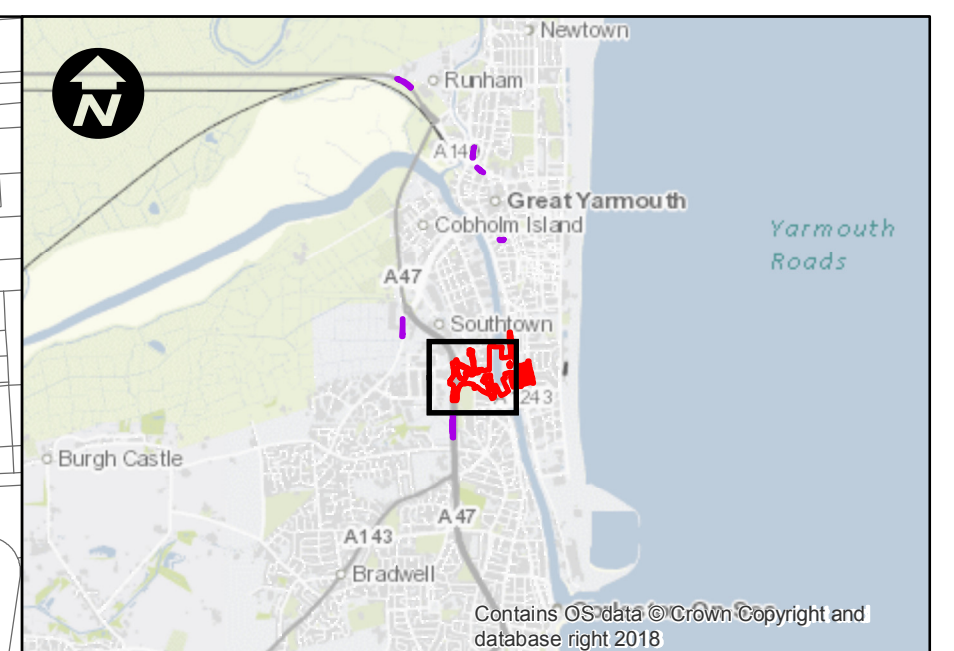
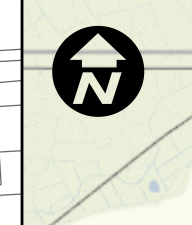
DRAWING TITLE FIGURE 16.1
 INTERPRETATIVE ENVIRONMENTAL
 DESK STUDY - STUDY AREA
 BOUNDARY
 (REGULATION 5(2)(a))

DRAWING STATUS
 FOR DCO APPLICATION

DRAWN	CHECKED	APPROVED	AUTHORISED
DE	NB	JW	MK

SCALE @ A1 SIZE 1:2,500 DATE 15/04/2019 REVISION P00

DRAWING NUMBER
 GYTRC-WSP-EGN-XX-DR-EN-2130



- Key:**
- Principal Application Site
 - Satellite Application Sites
 - BH4** Location of gas and groundwater monitoring wells
- Exploratory Holes 2017/2018**
- Borehole
 - Cone Penetration Test
 - Marine Borehole
 - Trial Pit
 - Window Sample
- Exploratory Boreholes 2006**
- Borehole
 - Trial Pit
 - Window Sample

Mapping reproduced by permission of Ordnance Survey on behalf of HMSO.
 © Crown copyright and database rights 2018 Ordnance Survey 100019340.

REVISION	DRAWN	CHECKED	APPROVED	DATE

DESCRIPTION

Norfolk County Council
 Tom McCabe
 Executive Director of
 Community and Environmental Services
 Norfolk County Council
 County Hall, Martineau Lane
 Norwich NR1 2SG

PROJECT TITLE

**GREAT YARMOUTH
 THIRD RIVER CROSSING**

DRAWING TITLE

**FIGURE 16.2
 EXPLORATORY HOLE LOCATIONS
 (REGULATION 5(2)(a))**

DRAWING STATUS

FOR DCO APPLICATION

DRAWN	CHECKED	APPROVED	AUTHORISED
SR	NB	HH	MK

SCALE @ A1 SIZE	DATE	REVISION
1:1,250	29/03/2019	P00

DRAWING NUMBER

GYTRC-WSP-EGN-XX-DR-EN-2131

